



Database Editor

Database Editor provides a set of Windows-based tools for streamlined setup and easy maintenance of the estimating databases you use with Estimating software for Sage Timberline Office.

Quickly add records and update fields in multiple records all at once. Global changes are immediately visible in a spreadsheet-style view.

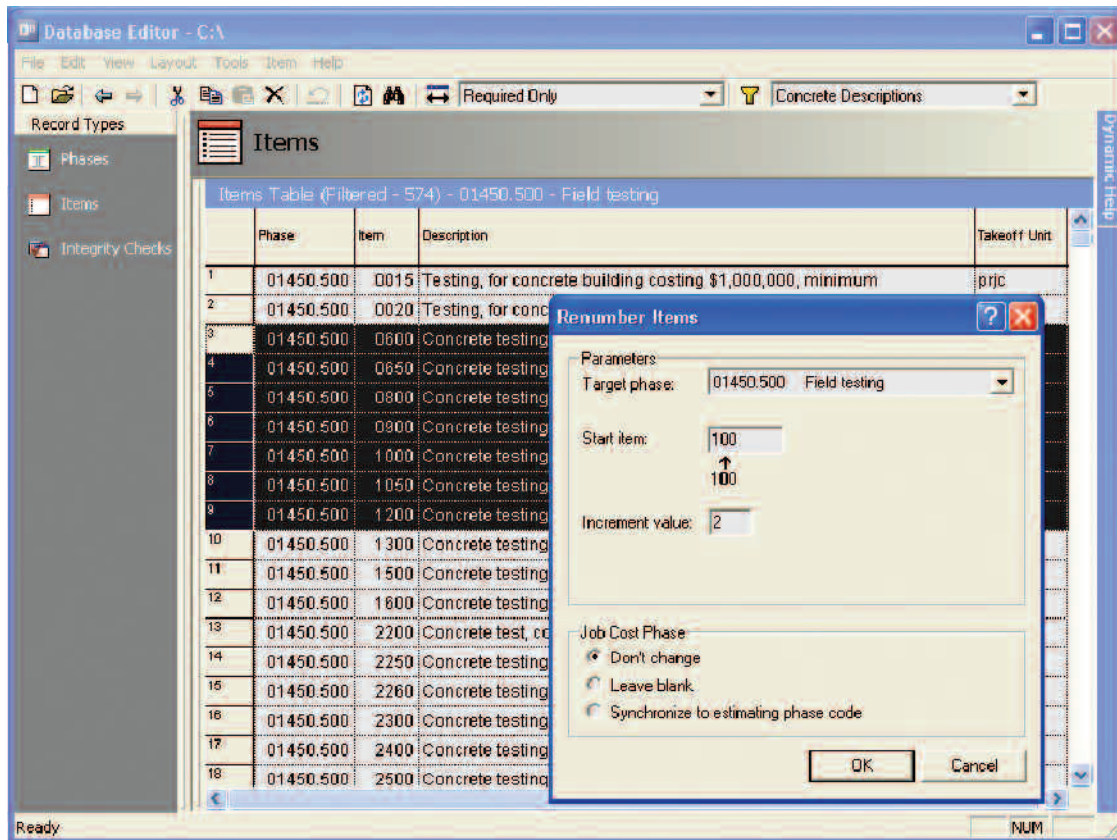
Database Editor ensures referential integrity of records throughout your database. Changing a phase description, for example, will carry through to the same description referenced in items, assemblies, and in models. You can also use several reporting tools to check your database for missing elements, such as phases or formulas referenced by other database elements.

Offering extensive and dynamic help, Database Editor can be used by both novice and experienced Sage Timberline Office users.

Features and efficiencies

- View, create, edit, and delete phases, group phases, and items in a spreadsheet-style format.
- Filter and sort to find specific data elements.
- Use common Windows-based conventions like insert, copy, and drag-and-drop to add new data elements.
- Replace text within all data elements or a range of data elements.
- Copy and paste data element information currently stored in external sources, such as Microsoft Excel.
- Undo edits.
- Renumber phases or items to move them within the same database or to another database.
- Hide and move columns around to simplify editing.
- Create and save multiple editing layouts for phases and items.

Database Editor is a part of Sage Timberline Office, fully integrated software created to streamline work and connect the people you depend on to build your business.



Speed database editing with tools such as copy/paste, replace, clear, fill-down, and renumber. Referential integrity remains intact as you edit.



800.628.6583 | Fax 888.477.0371 | www.sagesoftware.com

©2006 Sage Software, Inc. All rights reserved. The Sage Software logo and the Sage Software product and service names mentioned herein are registered trademarks or trademarks of Sage Software, Inc., or its affiliated entities. All other trademarks are the property of their respective owners. 01/06



150 South Washington St
Suite 401
Falls Church VA 22046
703.534.0166
www.fcatech.com